

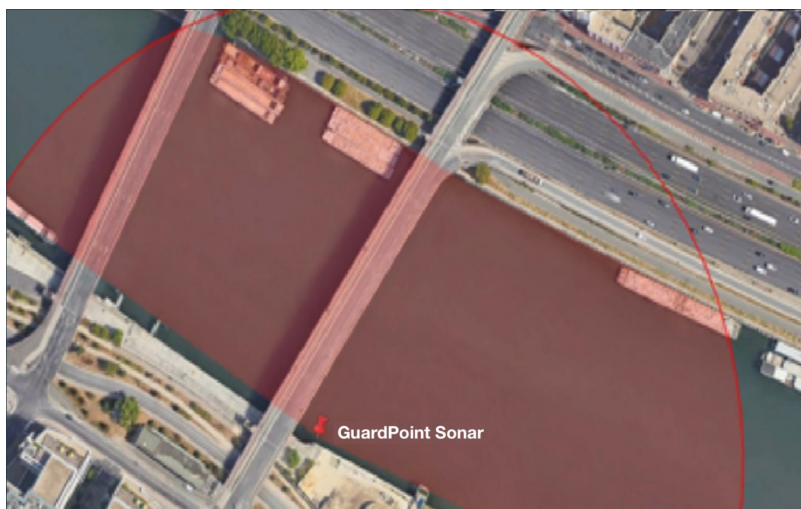
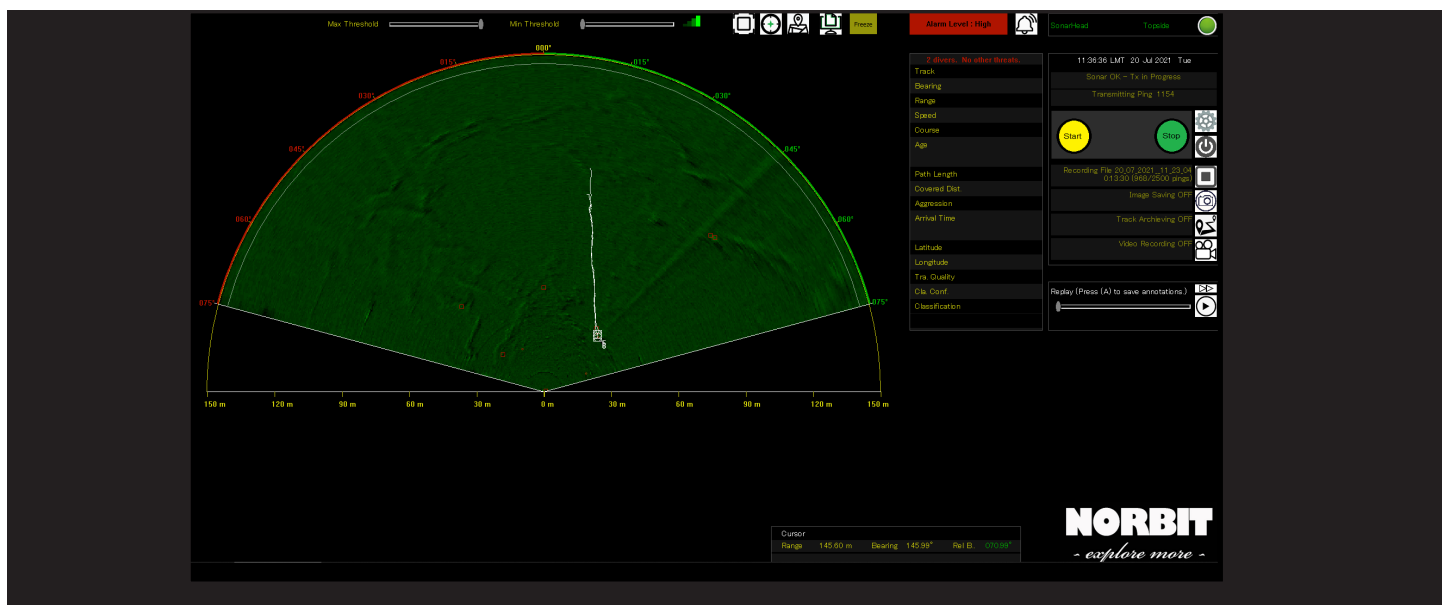


GuardPoint 400

A POWERFUL SURVEILLANCE TOOL EFFECTIVE IN DETECTING UNDERWATER INTRUDERS.

GuardPoint400 is a short-range intruder detection and classification sonar, effective in both deep and shallow waters. Designed to adapt to complex environments in the presence of narrow waterways and obstacles in ports/harbours.

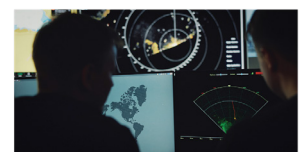
One single GuardPoint400 sonar head offers a surveillance range of up to 200m, designed to Detect, Track, Classify and Monitor response to modern underwater intruder threats. Designed to function optimally in shallow and deep water and challenging environmental conditions, the GuardPoint400 system remains an easy to use system for surveillance for non experienced personnel or expert sonar operators alike. Through the networking of multiple sonar heads extended coverage can be achieved, providing a robust and reliable solution for the most complex of surveillance tasks.



Integration Solutions



Computer



Command and Control Room

GuardPoint400 Intruder Detection Sonar

FEATURES

- ✓ Automatic Intruder Detection and Classification
- ✓ Real Time Alarms with GuardPoint Intruder Detection Software
- ✓ 24/7/365 Unattended Operation
- ✓ Multi-sonar Network for Expanded Coverage
- ✓ Seamless Integration to multi-layered networks, 3rd Party Command and Control Systems
- ✓ Highly portable
- ✓ Quick and simple one person deployment

APPLICATIONS

- ✓ Naval and Coastal Protection
- ✓ Border, Port and Harbour Security
- ✓ Rivers and Dams
- ✓ Mansions and Government Palaces Surrounded by Shallow Waters

OPTIONS

- ✓ Remote Desktop and Video Interfaces
- ✓ Loudhailer
- ✓ NORTrace Performance Prediction Tool
- ✓ ClearSignal™ Coating

TECHNICAL SPECIFICATION

TRANSMISSION FREQUENCY	400kHz
HORIZONTAL COVERAGE	UP TO 180°
VERTICAL COVERAGE	20°
MOUNTING	FIXED INSTALLATION ON THE SEABED, PIER PILE OR HARBOUR WALL
DEPTH RATING	100m
TYPICAL DETECTION RANGE (OPTIMAL CONDITIONS)	OPEN CIRCUIT DIVER: 150+ m CLOSED CIRCUIT DIVER: 100+ m UNDERWATER VEHICLE: 200+ m
WEIGHT	2.9kg (AIR) 1.3kg (WATER)
POWER CONSUMPTION	30W (10 – 28 VDC, 110 – 240 VAC)
OPERATING TEMPERATURE	SONAR HEAD -4°C TO +40°C TOPSIDE UNIT -20°C TO +55°C
STORAGE TEMPERATURE	-20°C TO +60°C

