

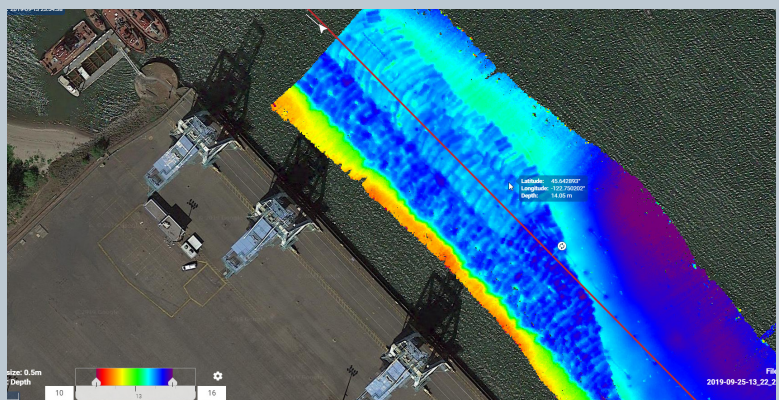
NORBIT

Autopilot Solution for USV/ASV

NORBIT Autopilot solution for unmanned surface vehicles (USVs) or autonomous surface vehicles (ASVs), allows for fully automated line planning without the need for operator intervention. The vehicle is controlled remotely by NORBIT data acquisition software DCT. DCT will start recording data once the vehicle reaches the first survey line, and the USV will automatically move on to the next survey line once the current one is completed. It's a convenient and efficient way to collect survey data.

Features

- Simple interface of NORBIT Autopilot with Ardupilot* via single MavLink connection
- Improves navigation of the USV with NORBIT integrated GNSS/INS data. No other GPS required
- Automatic survey based on bathymetry coverage.
- No manual boat driving required
- Remote display for operator via tablet and web browser
- Integration manual provided for every ArduPilot (CubePilot, Raspberry Pi, etc.)
- Compatible with all NORBIT WINGHEAD and iWBMS sonar series integrated with Applanix or SBG GNSS/INS



* ArduPilot is a trusted, versatile, and open source autopilot system

