

NORBIT GuardPoint™ 70

GUARDPOINT DIVER DETECTION SONAR

Underwater Sensing Technology for Defense and Security

A powerful surveillance tool effective in detecting underwater intruders.

Guardpoint can recognize Open-Circuit and Close-Circuit Divers, Diver and Swimmer Delivery Vehicles (DDV and SDV) and Submersibles. One single GuardPoint sonar head offers a surveillance range of up to 1000m.

GuardPoint is designed to detect difficult targets in the toughest environments, while remaining an easy to use system for professionals as well as non-sonar operators. Multiple sonar heads can be networked together to achieve maximum coverage. GuardPoint automatically detects, tracks, classifies and alerts to the presence of underwater intruders.



Features

- ✓ Automatic Alarm Generation
- ✓ Long Range
- ✓ 7 days 24 Hours Operation
- ✓ Ease to Use Interface
- ✓ Network of Multiple Sonar Heads
- ✓ Marine Mammal Mitigation
- ✓ Long Pulse Length
- ✓ Unattended Operation
- ✓ Easy Maintenance

Applications

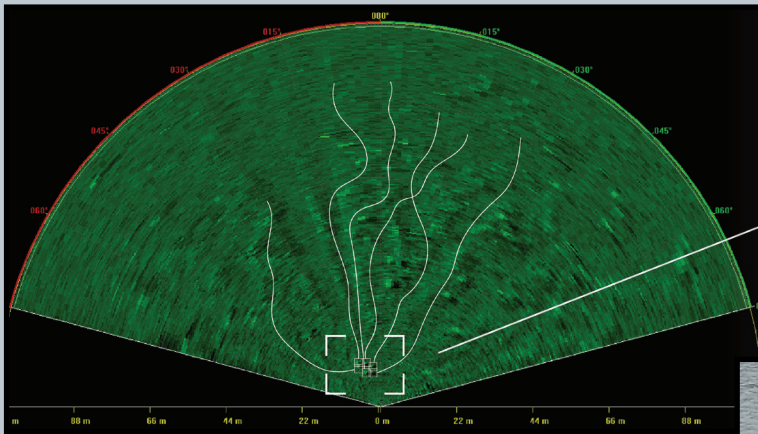
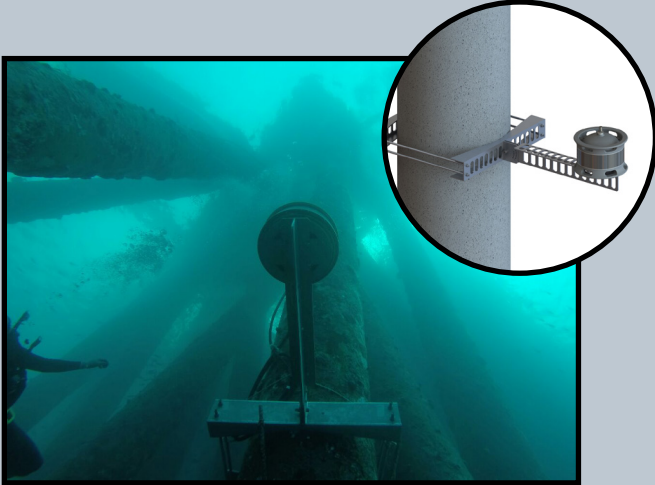
- ✓ LNG and Oil Terminals
- ✓ Power Plants
- ✓ Naval Bases
- ✓ Commercial Ships
- ✓ Naval Units
- ✓ Offshore Rigs
- ✓ Mega Yachts
- ✓ Cruise Ships

Options

- ✓ Seabed, Pier Pile, Portable or Rigidly Mounted Deployment
- ✓ Integration to Underwater Loudhailer
- ✓ Mobile Application for Intervention Team
- ✓ Interfacing 3rd Party Systems and Command and Control Software
- ✓ Remote Monitoring
- ✓ NORTrace Performance Prediction Tool
- ✓ Integration to NORBIT SeaCOP

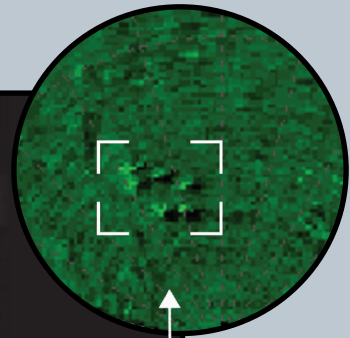
EXPERTS in sensor equipment providing telemetry and communication solutions for harsh environments.
NORBIT develops and delivers innovative products - allowing you to explore more.

GUARDPOINT DIVER DETECTION SONAR



No threats.

- Track
- Bearing
- Range
- Speed
- Course
- Age
- Path Length
- Covered Dist
- Arrival Time
- Latitude
- Longitude
- Trn. Quality
- Cls. Conf.
- Classification



NORBIT Tracking Software provides

- PPI Scope, B/Scan, Magnifier, EchoGram, Map Underlaid Displays, Markers and Cursors for On-Screen Measurements
- Data and Annotation Recording and Replay
- Track Information (position and arrival time to asset)
- Automatic Wake Suppression
- Suppression and Alarm Zones

TECHNICAL SPECIFICATION

HORIZONTAL COVERAGE	360° (SECTORAL TRANSMISSION AVAILABLE)
VERTICAL COVERAGE	12°
DEPLOYMENT DEPTH	5 TO 55m
FREQUENCY	70kHz
SOURCE LEVEL	206 dB re1μPa@1m
PULSE LENGTH	UP TO 128ms
TYPICAL DETECTION RANGE (OPTIMAL CONDITIONS)	OPEN CIRCUIT DIVER: 900m+ (1800m+ DIAMETER) CLOSED CIRCUIT DIVER: 400m+ (800m+ DIAMETER) AUV, SDV AND MINISUB: 1000m+ (2000m+ DIAMETER)
WEIGHT	<50kg (SONAR HEAD) <10kg (TOPSIDE UNIT)
INPUT VOLTAGE	90 – 240 VAC
OPERATING TEMPERATURE	SONAR HEAD -4°C TO +40°C TOPSIDE UNIT -20°C TO +45°C (COOLING OPTIONS AVAILABLE FOR TROPICAL AREAS)

