

WIDEBAND MULTIBEAM SONAR

Compact Forward Looking - Wide coverage

The WBMS-series are ultra compact sonars designed specifically for use on moving platforms. NORBIT's wideband multibeam technology allows long range real-time image updates, whilst simultaneously achieving high range resolution allowing you to explore more.

The WBMS-series are based on a flexible sonar platform that utilizes the latest in analog and digital signal processing. With broad R&D expertise NORBIT has developed, from the ground-up, exciting new technology that allows existing and new applications to benefit from the advantages offered by a compact wideband curved-array multibeam sonar.



Features

- ✓ Long Range
- ✓ High Update Rate
- ✓ High Angular Resolution
- ✓ High Range Resolution
- ✓ Ethernet Interface
- ✓ Ultra Compact Single Unit Solution
- ✓ Standard Product Delivery Incl. Shipping Case and Sonar Interface Unit

Applications

- ✓ Inspection (ROV, AUV and Other Moving Platforms)
- ✓ Obstacle Avoidance
- ✓ Search And Recovery
- ✓ Automatic Leak Detection
- ✓ Marine Construction
- ✓ Fisheries
- ✓ Sciences

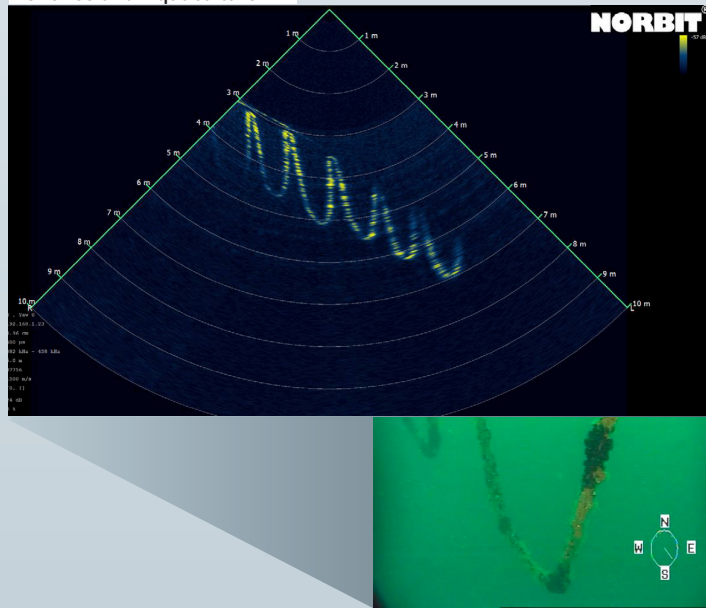
Options

- ✓ 900m, 4500m Or 6000m Depth Rating
- ✓ Custom Vertical Beam-Width (2-30 Deg)
- ✓ VDSL Data-link
- ✓ Weather Rated Command /Control Laptop
- ✓ AUV, ROV Cabling
- ✓ Custom Cable Length Options
- ✓ ROV Version

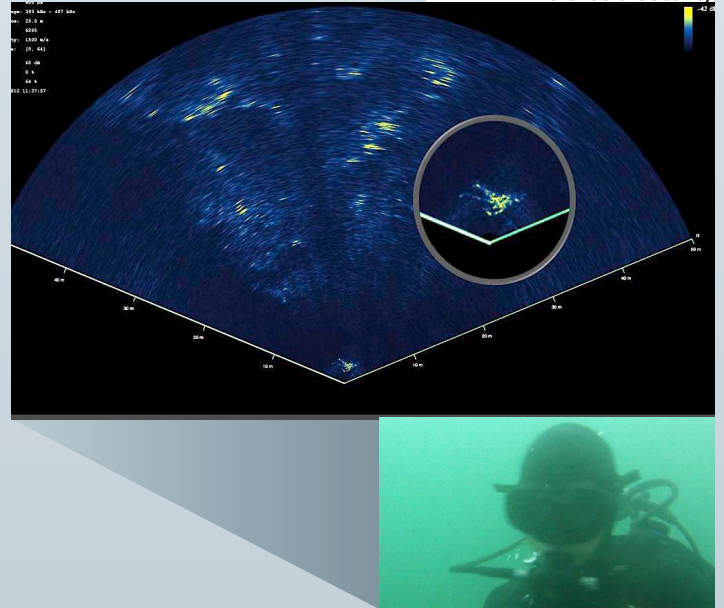
EXPERTS in sensor equipment providing telemetry and communication solutions for harsh environments.
NORBIT develops and delivers innovative products - allowing you to explore more.

NORBIT Compact Multibeam Echo Sounder

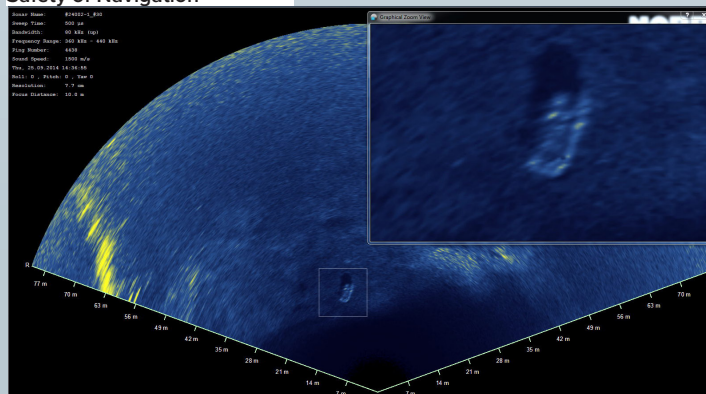
Fisheries and Aquaculture



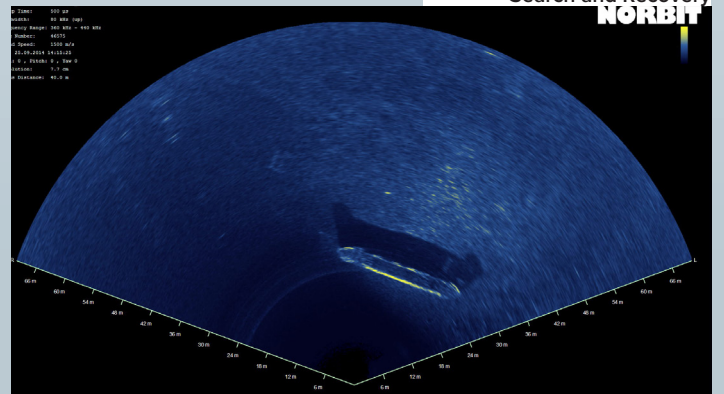
Defense & Security



Safety of Navigation

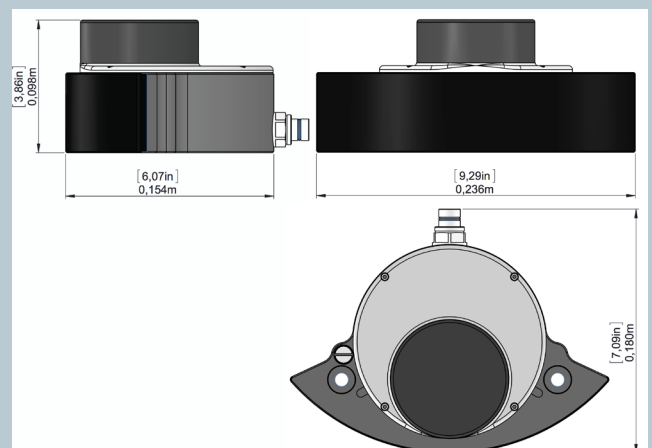


Search and Recovery



TECHNICAL SPECIFICATION

| | |
|---------------------|---|
| HORIZONTAL COVERAGE | 7° TO 180° (TYPICAL 150°) |
| VERTICAL COVERAGE | > 25° |
| ANGLE RESOLUTION | <0.9° |
| OPERATING FREQUENCY | 400kHz +/- 40kHz |
| RANGE RESOLUTION | < 10mm |
| RANGE | > 250m (NOMINAL 100m) @ 400kHz |
| UPDATE RATE | 60Hz |
| DEPTH RATING | UP TO 900m, 4500m or 6000m |
| WEIGHT - DRY | 2.9 kg |
| WEIGHT - WET | APP. 0.6kg |
| CABLE LENGTH | STD. 8m, OPT.: 2m, 25m, 50m, PIGTAIL, 600m WITH VDSL |
| VOLTAGE | 10-28VDC OR 100-240VAC (ROV DIRECT: 24-29VDC) |
| POWER CONSUMPTION | 30W (40 MAX) |
| INTERFACES | 100Mb/s ETHERNET 16Mb/s OPTIONAL VDSL |
| ENVIRONMENTAL | TOPSIDE: IP67: DUST TIGHT, PROTECTED AGAINST THE EFFECT OF IMMERSION UP TO 1m |
| OPERATING TEMP. | -4°C TO +40°C |
| STORAGE TEMP. | -20°C TO +60°C |



Part #12002

NORBIT SUBSEA | STIKLESTADVEIEN 1 | N-7041 TRONDHEIM | NORWAY | PHONE +47 73 98 25 50 | subsea@norbit.com

COPYRIGHT©2014 NORBIT, ALL RIGHTS RESERVED. WHILE EVERY EFFORT IS MADE TO ENSURE THE INFORMATION GIVEN IS ACCURATE, NORBIT DOES NOT ACCEPT LIABILITY FOR ANY ERRORS OR OMISSIONS, ALL NON-METRIC WEIGHTS AND MEASURES ARE APPROXIMATE AND OTHER INFORMATION IN THIS DOCUMENT IS SUBJECT TO CHANGE WITHOUT NOTICE