

WIDEBAND MULTIBEAM SONAR

Compact Forward Looking - Wide coverage

The WBMS-series are ultra compact sonars designed specifically for use on moving platforms. NORBIT's wideband multibeam technology allows long range real-time image updates, whilst simultaneously achieving high range resolution allowing you to explore more.

The WBMS-series are based on a flexible sonar platform that utilizes the latest in analog and digital signal processing. With broad R&D expertise NORBIT has developed, from the ground-up, exciting new technology that allows existing and new applications to benefit from the advantages offered by a compact wideband curved-array multibeam sonar.



Features

- ✓ Long Range
- ✓ High Update Rate
- ✓ High Angular Resolution
- ✓ High Range Resolution
- ✓ Ethernet Interface
- ✓ Ultra Compact Single Unit Solution
- ✓ Standard Product Delivery Incl. Shipping Case and Sonar Interface Unit

Applications

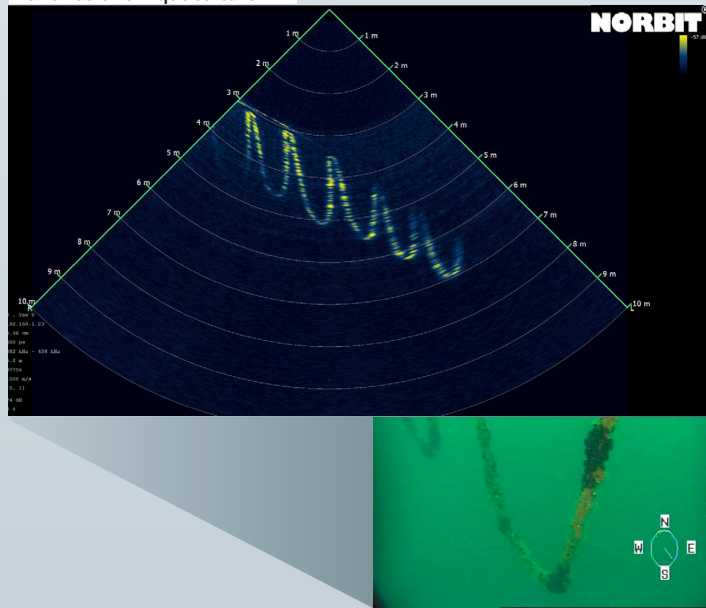
- ✓ Inspection (ROV, AUV and Other Moving Platforms)
- ✓ Obstacle Avoidance
- ✓ Search And Recovery
- ✓ Automatic Leak Detection
- ✓ Marine Construction
- ✓ Fisheries
- ✓ Sciences

Options

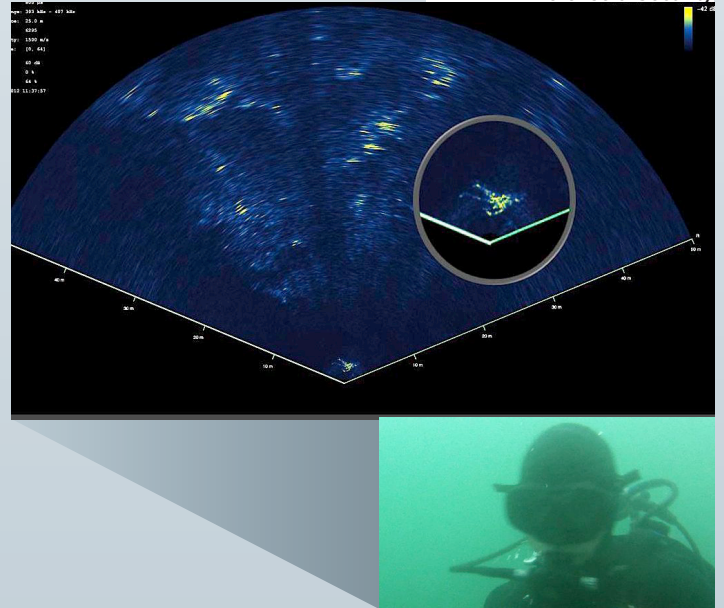
- ✓ 4500m Or 6000m Depth Rating
- ✓ Custom Vertical Beam-Width (2-30 Deg)
- ✓ VDSL Data-link
- ✓ Weather Rated Command /Control Laptop
- ✓ AUV, ROV Cabling
- ✓ Custom Cable Length Options
- ✓ ROV Version

NORBIT Compact Multibeam Echo Sounder

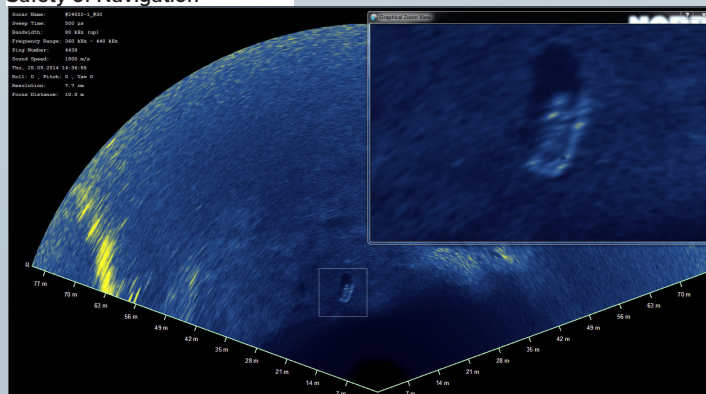
Fisheries and Aquaculture



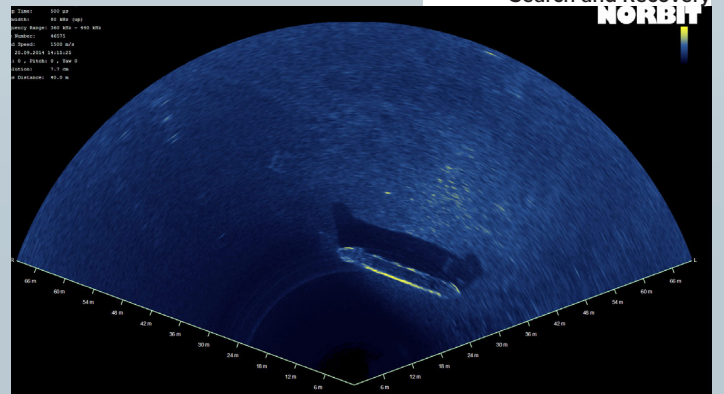
Defense & Security



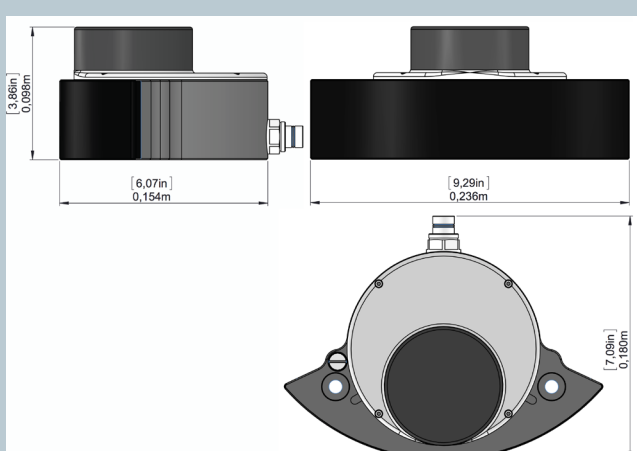
Safety of Navigation



Search and Recovery



TECHNICAL SPECIFICATION	
HORIZONTAL COVERAGE	7° TO 180° (TYPICAL 150°)
VERTICAL COVERAGE	> 25°
ANGLE RESOLUTION	<0.9°
OPERATING FREQUENCY	400kHz +/- 40kHz
RANGE RESOLUTION	< 10mm
RANGE	> 250M (NOMINAL 100M) @ 400KHZ
UPDATE RATE	60Hz
DEPTH RATING	UP TO 900m, 4500m or 6000m
WEIGHT - DRY	2.9 kg
WEIGHT - WET	APP. 0.6kg
CABLE LENGTH	STD. 8m, OPT.: 20m, 2m PIGTAIL, 600m WITH VDSDL
VOLTAGE	10-28VDC OR 100-240VAC (ROV DIRECT: 22-29VDC)
POWER CONSUMPTION	30W (40 MAX)
INTERFACES	100Mb/s ETHERNET 16Mb/s OPTIONAL VDSDL
ENVIRONMENTAL	TOPSIDE: IP67: DUST TIGHT, PROTECTED AGAINST THE EFFECT OF IMMERSION UP TO 1m
OPERATING TEMP.	-4°C TO +40°C
STORAGE TEMP.	-20°C TO +60°C



Part #12002