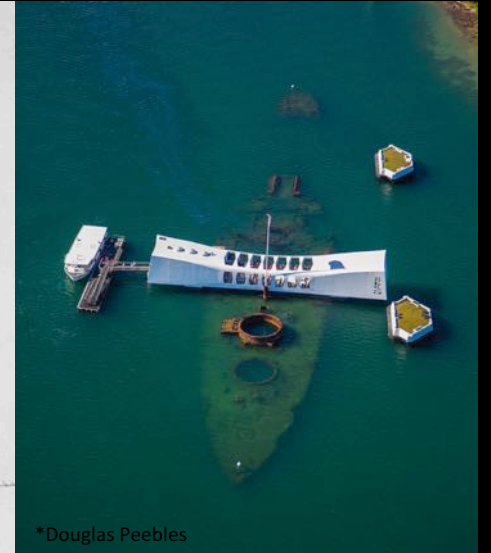
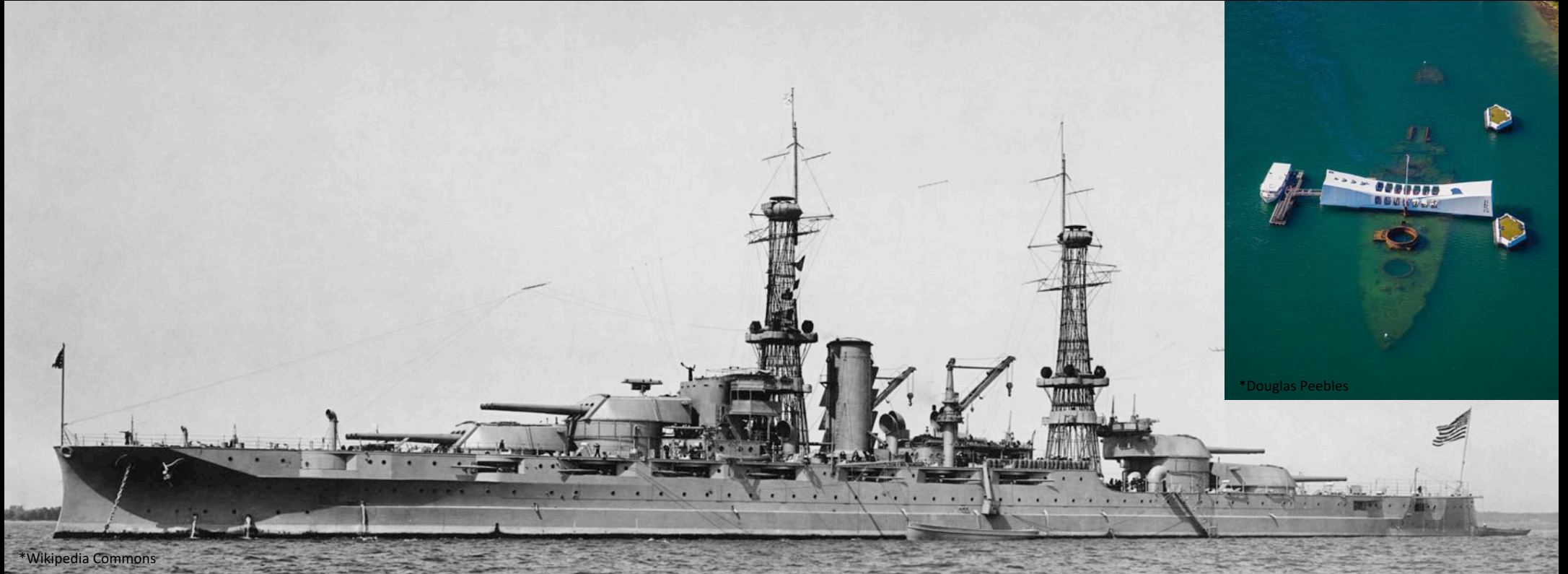


# USS Arizona

Pearl Harbor, HI



December 7<sup>th</sup> , 1941 the USS Arizona was moored in Pearl Harbor Hawaii when a Japanese bomb detonated in a powder magazine causing the ship violently explode and sink taking 1,177 lives with her.

The wreck is still on the bottom of Pearl Harbor and in 1962 was made into the USS Arizona Memorial. A bridge was erected over the ship as a visitors center.

As of June 5<sup>th</sup> 2018 the memorial is close due to a crack in the outside walls. During this closure an inspection of the in water structures of the memorial was conducted to ensure safety for continued operation.





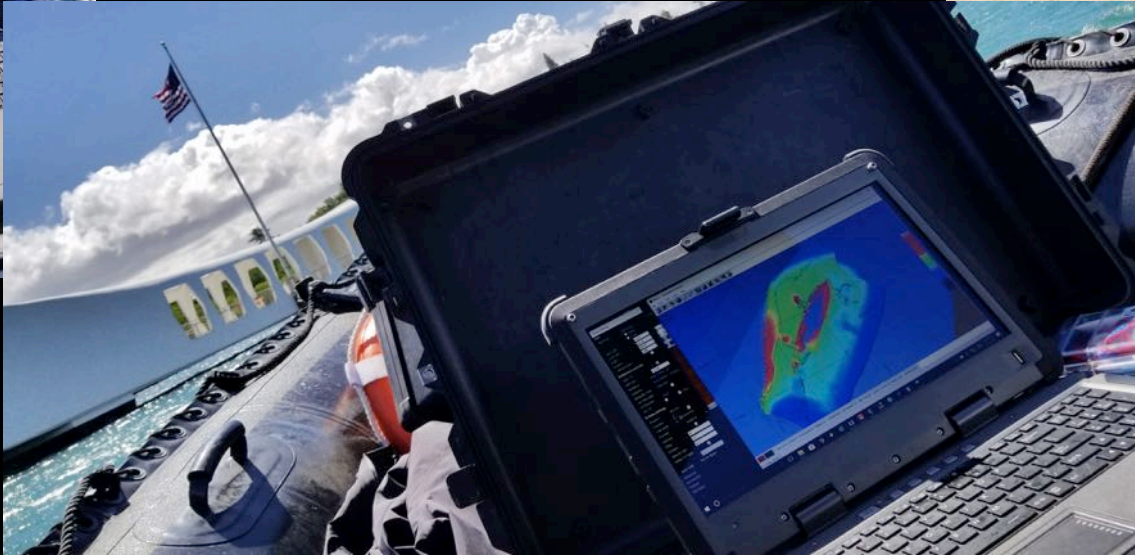
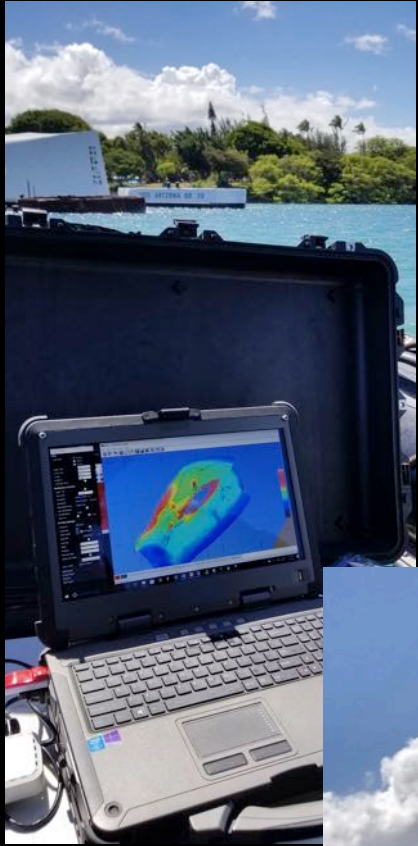
In July 2018 the US Navy, Naval Facilities Engineering Command (NAVFAC), based out of Port Hueneme California, along with NORBIT personnel conducted a survey around the USS Arizona.

The survey utilized the NORBIT iWBMSH STX. The NORBIT STX utilizes a steerable transmitter to sonify objects on the sea floor from multiple angles in one pass. This allows a more detailed inspection of an object with less effort.

The STX was mounted to a rigid inflatable utilizing the Portus Pole. The Portus Pole is a lightweight, carbon fiber Sonar Pole specially built for the NORBIT. The mount fits a ski case, allowing it, along with the NORBIT, to be checked as airline luggage.



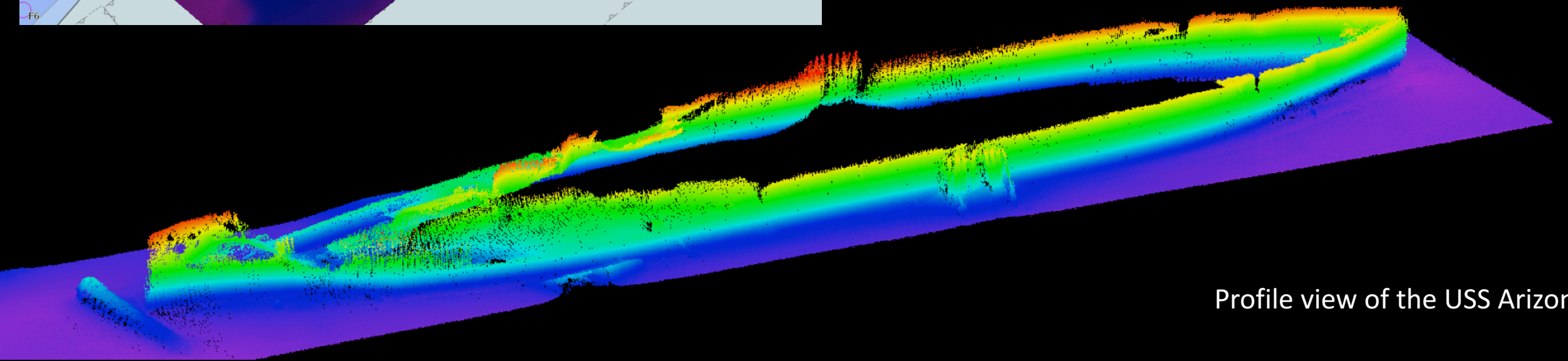
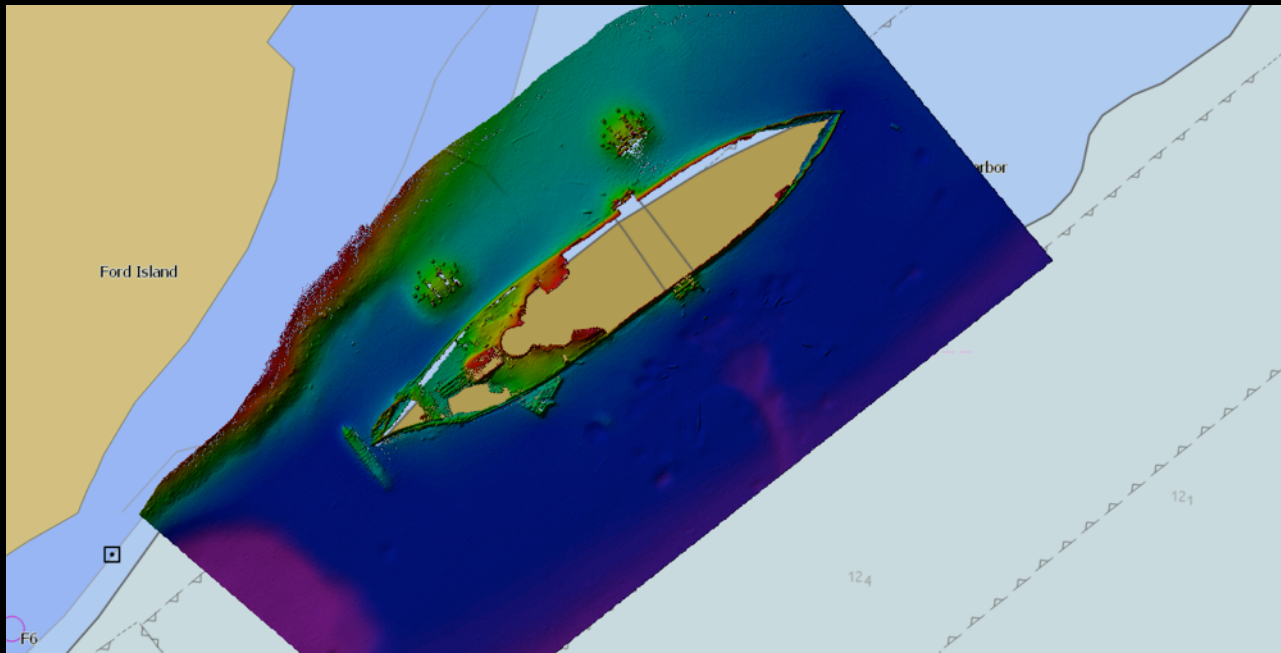
Full survey kit, Sonar, INS, mount, base station and PC. All items can be checked in Airline luggage



**NORBIT**



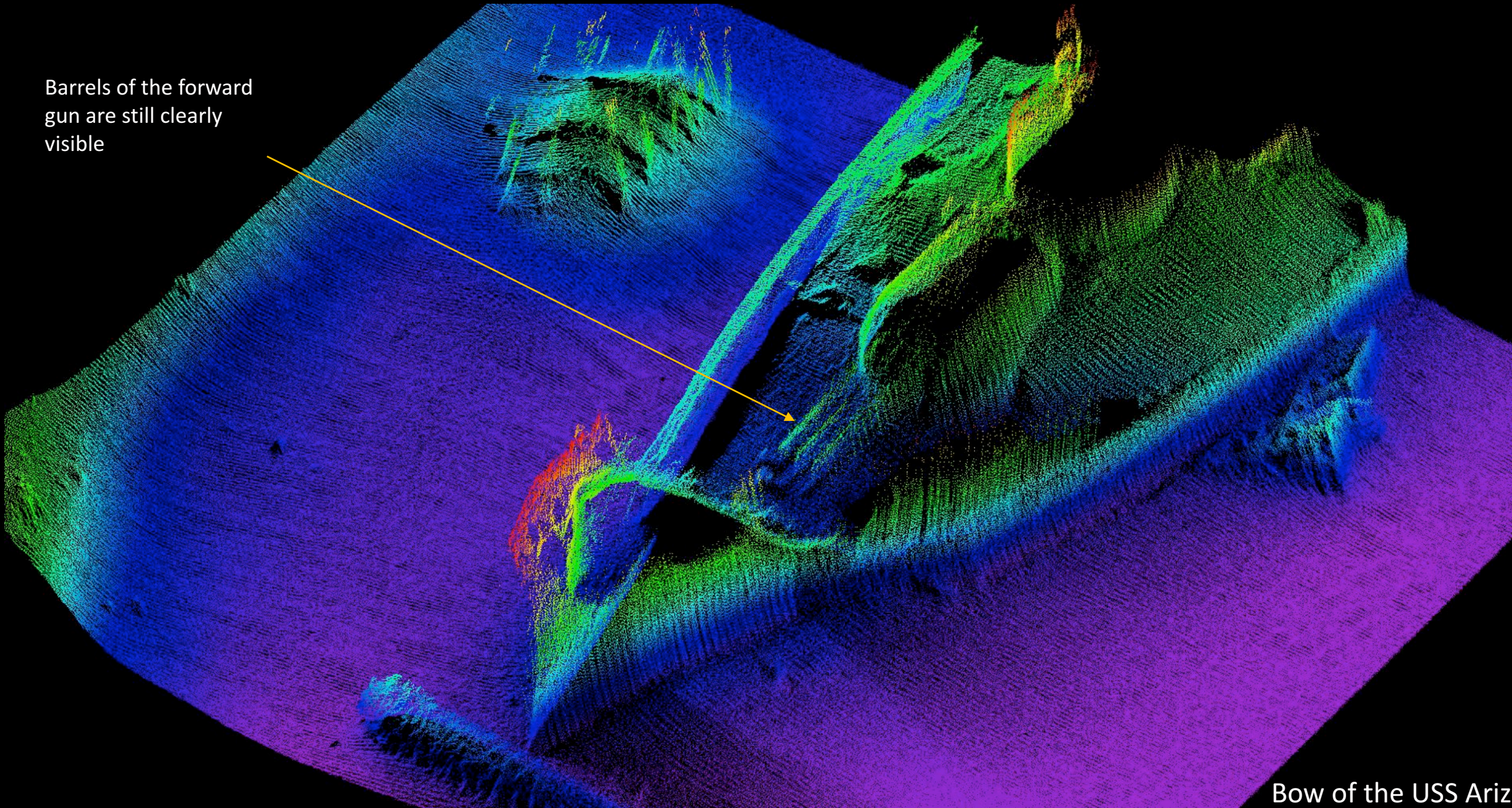




Profile view of the USS Arizona

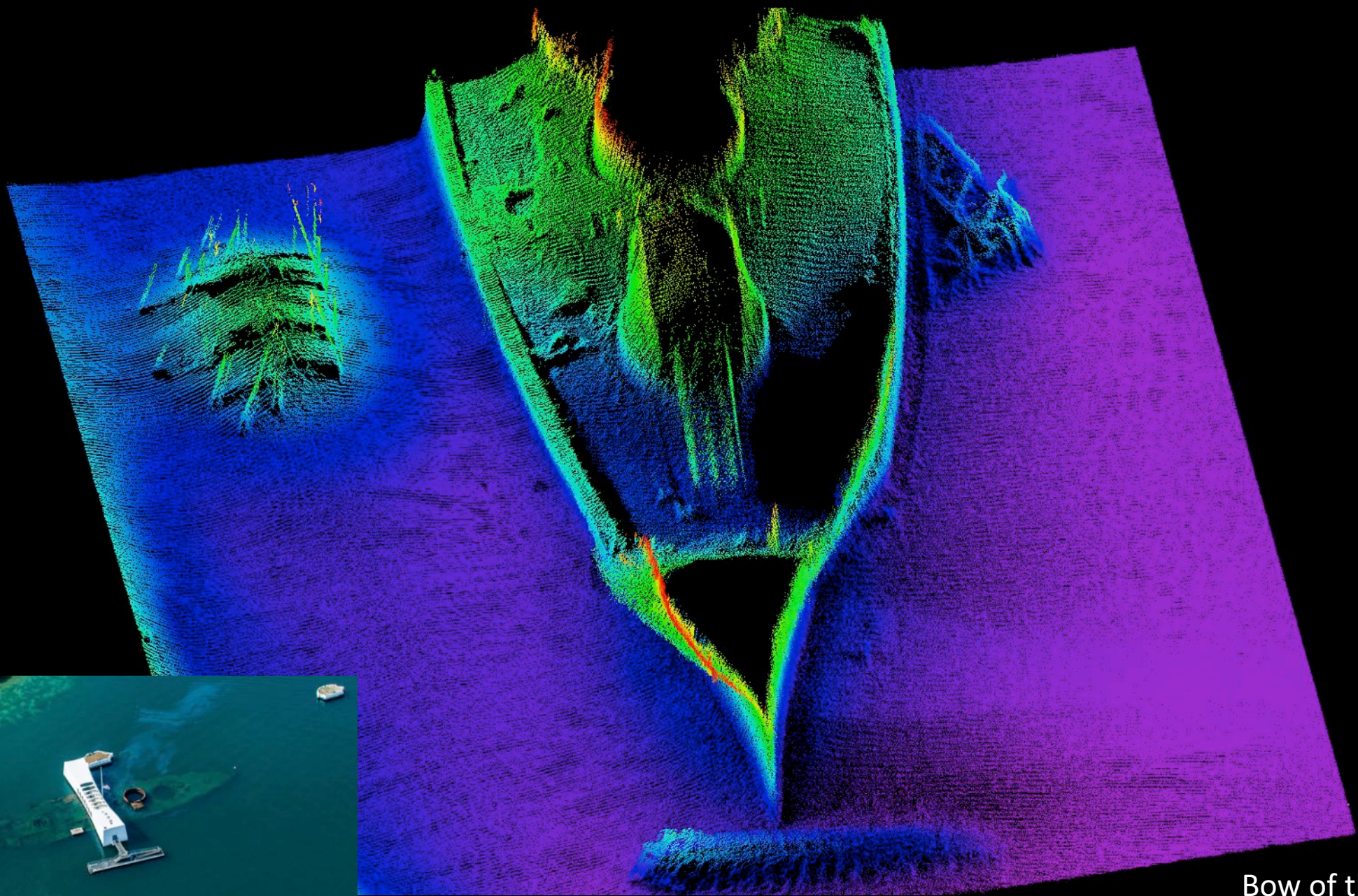


Barrels of the forward  
gun are still clearly  
visible



Bow of the USS Arizona





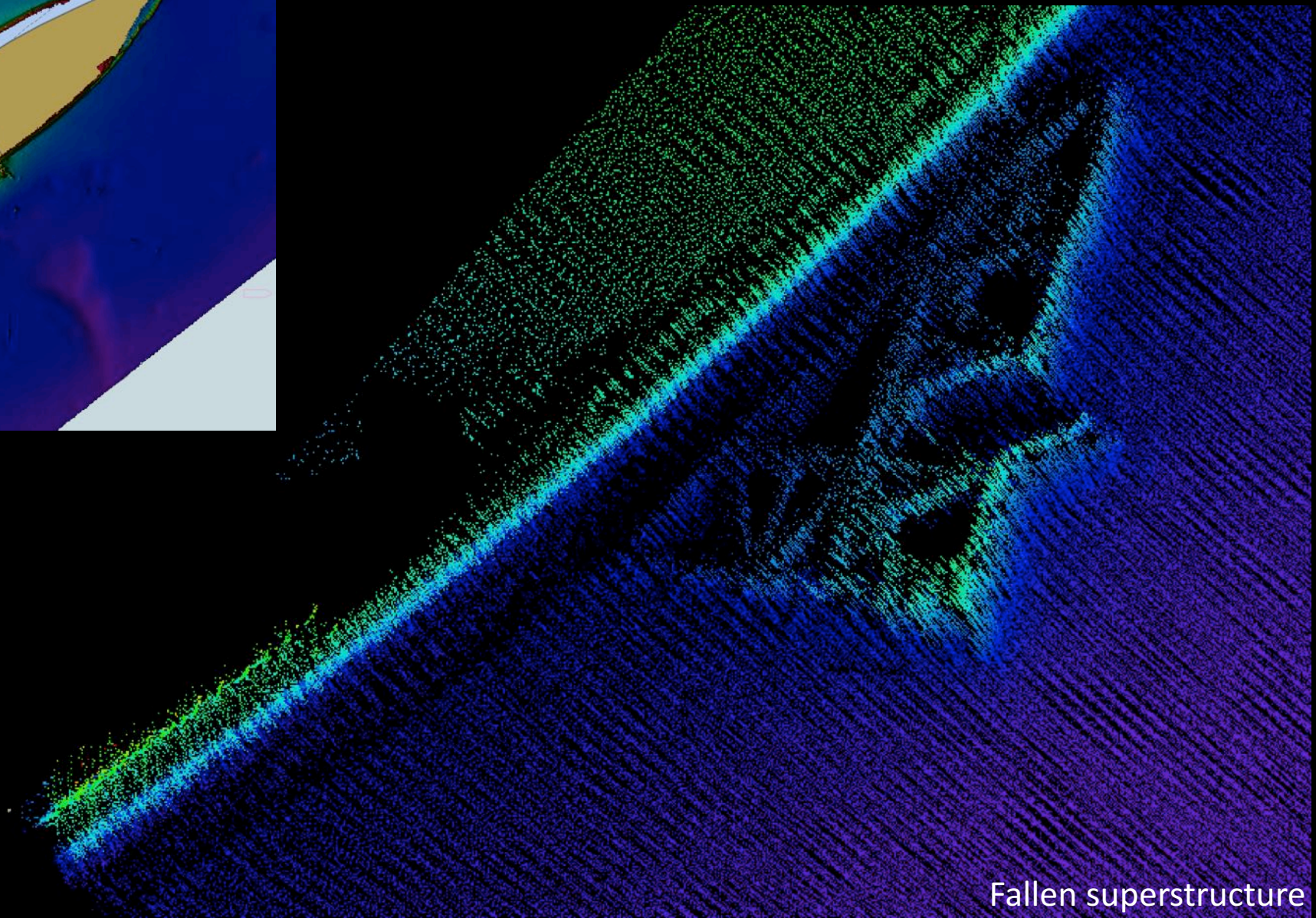
Bow of the USS Arizona



**NORBIT**

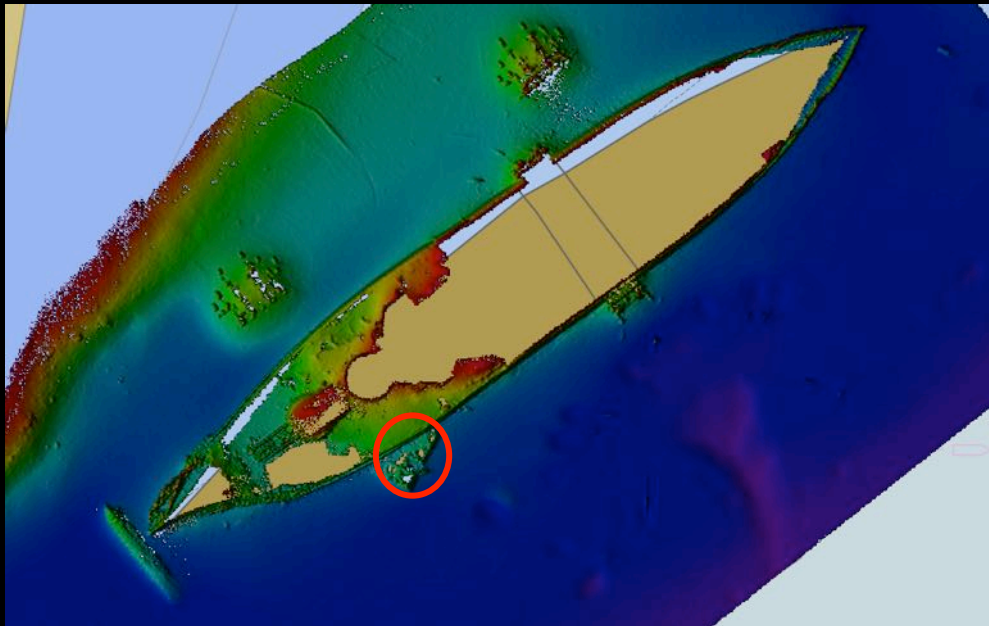






Fallen superstructure





Bow of USS Arizona  
showing damage as  
well as unknown object  
at front

