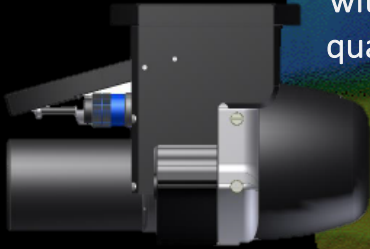


Norbit Training Options

The Norbit family of WBMS sonars are, by design, the easiest sonars to operate. Even with this in mind there are still critical steps that are required to collect quality data. In the effort to ensure that Norbit users are able to get the most out of the system Norbit offers training services for all levels of survey experience. The following overviews are simply a base for setting up your customized training.



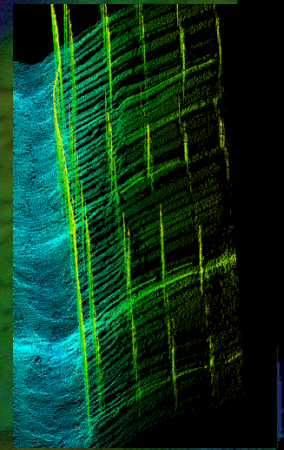
From the Beginning

For users that are new to hydrography. A “from the beginning course” will cover all information pertinent to hydrographic survey. The course will go over, hydrography basics, theory, equipment setup, survey planning, data acquisition and processing. This is a lengthy course lasting from 7-10 days and includes classroom and field time.



New to Multibeam

For users that are making the jump from singlebeam to multibeam this 3-5 day training will go over multibeam theory and data collection. This training usually includes a day of classroom training, 1-2 days of field time and 1-2 days of processing.



New to Norbit

While the Norbit is easy to use and operate even experienced users will benefit from some onsite training. These training sessions are short, lasting 1-3 days and will allow users to get the most out of the system. No time is wasted as the focus is on the rapid setup and calibration of the system so there will be more time for efficient survey.

